



## Greenfield Park, Freckleton, Preston, PR4 1UB

- Well Presented Two Bedroom Residential Park Home
- Double Unit Providing Spacious Accommodation
  - Modern Shower Room
- UPVC Double Glazing and Gas Central Heating
- Situated on Greenfield Park
- Two Double Bedrooms
- lovely Wrap Around Gardens And Driveway Provide Ample Off Road Parking
- Realistically Priced - Don't Miss out !!!

Contact Annette & Team Tempo **NOW**

**01772 633399**  
[info@tempoestates.co.uk](mailto:info@tempoestates.co.uk)  
[www.tempoestates.co.uk](http://www.tempoestates.co.uk)

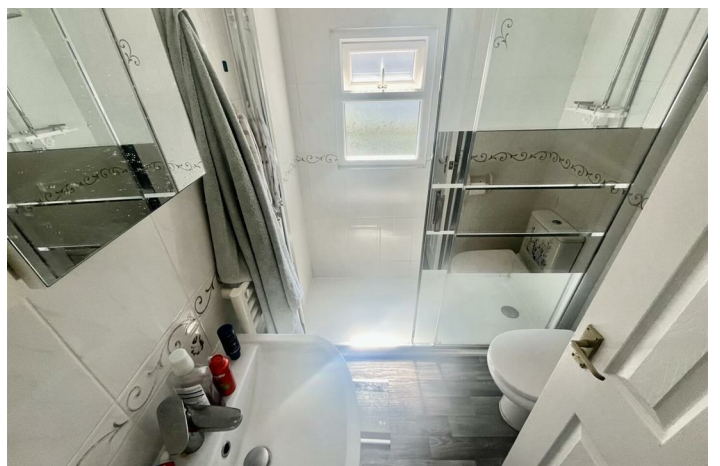
# Greenfield Park, Freckleton, Preston PR4 1UB

Tempo park homes are pleased to bring to the market this well presented double unit, two bedroom residential park home, on a much sought after residential park. Greenfield Park is only one mile from Freckleton village centre with range of local shops and amenities with bus stops at the entrance of the Park to Lytham St Annes and the Fylde Coast. Property briefly comprises: Dining Hall, Spacious Lounge, Fitted Kitchen, Two Double Bedrooms and modern shower room. Lovely wrap around gardens and driveway provide ample off road parking. This fine park home is realistically priced to achieve a quick sale, so do not miss out on this opportunity!!!!



Council Tax Band: A

Tenure: Leasehold



### Dining Hall

9'11" x 8'2"

Sliding patio doors open into the Dining Hall. Wood effect flooring and doors to:

### Lounge

11'10" x 19'8"

Spacious Lounge with UPVC windows to front and side elevations allowing ample natural light to enter. Fitted fireplace and hearth, vaulted ceiling and new carpet.

### Inner Hall

Built in storage cupboard and doors to :

### Kitchen

12'10" x 9'

Fitted kitchen with range of eye and base level units in white with contrasting worktops and tiled splashback. Single bowl sink with drainer and mixer tap, inset electric hob with extractor above and electric oven below. Freestanding fridge freezer, under counter washing machine and dishwasher. Built in storage cupboard housing the condensing combi boiler. UPVC

window to the side elevation and door leading in to garden.

### Bedroom 1

13'1" x 9'5"

Double bedroom with built in wardrobes. UPVC window to the rear.

### Bedroom Two

11'10" x 9'3"

Further double bedroom with built in wardrobes. UPVC window to the rear.

### Shower Room

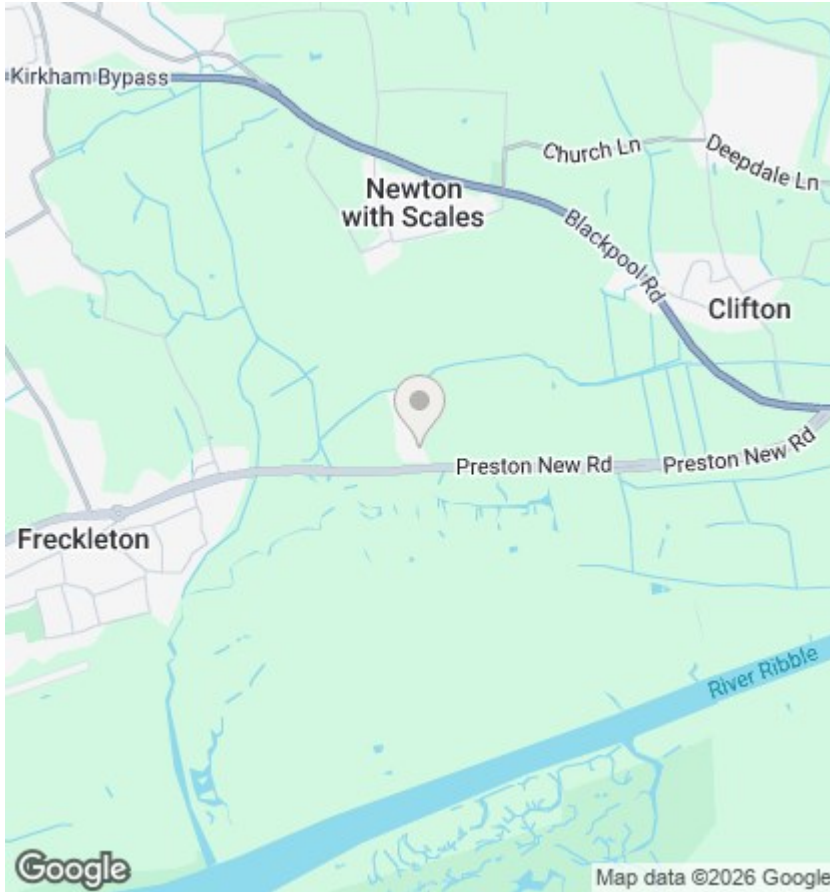
6'8" x 5'6"

Three piece suite in white comprising: low flush WC, hand wash basin with pedestal and tiled splashback and walk in shower. UPVC obscured window to side elevation.

### Exterior

Lovely wrap around gardens and driveway provide ample off road parking.





## Notice

Please note we have not tested any apparatus, fixtures, fitting or services. Interested parties must undertake their own investigation into the working order of these items. All measurements stated in this brochure are approximate and photographs provided are for guidance only. We are advised that the property is subject to site fees.

## Viewings

Viewings by arrangement only. Call 01772 633399 to make an appointment.

GROUND FLOOR



While every attempt has been made to ensure the accuracy of the floorplan contained here, measurements of doors, windows, rooms and any other items are approximate and no responsibility is taken for any error or omission in the drawings. This plan is for illustrative purposes only and should not be used as such by any prospective purchaser. The services, systems and appliances shown have not been tested and no guarantee is given as to their operability or efficiency can be given.  
Made with Metropix CS026

Misrepresentation Act 1967:- tempoleisure.co.uk looks to ensure that all our sales particulars are accurate and reliable, we believe the above details to be correct but their accuracy cannot be guaranteed and they do not constitute any part of an offer or contract. Any intending purchasers or lessees must satisfy themselves by inspection or otherwise as to the correctness of each statement in these particulars before entering into any formal contract to purchase or to rent this property.

**01772 633399**

**info@tempoestates.co.uk**

**www.tempoestates.co.uk**

Contact Annette & Team Tempo **NOW**